

TemperShield News

Toughened Curved Glass

Glasshape Ltd
September / October 2009



Welcome back to TemperShield News!

The last two months have been extremely busy yet challenging with some very impressive jobs being completed. *(We did hear about the recession but decided not to participate)!*

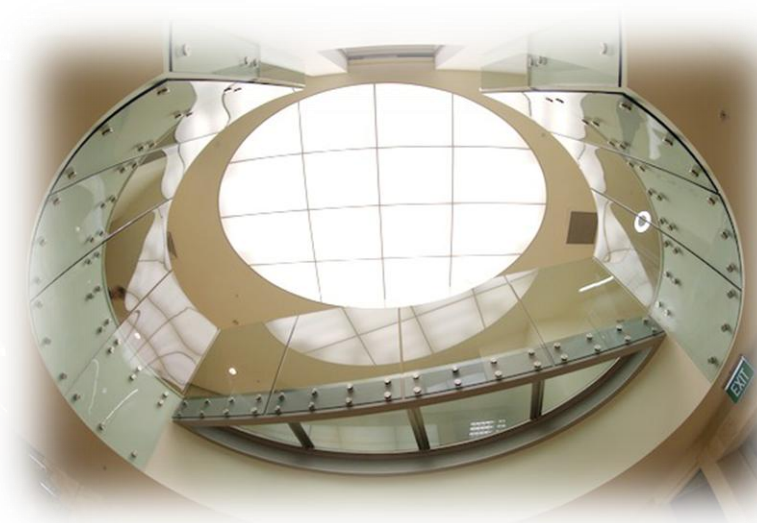
This Sept 09 issue we proudly present to you the latest commercial interior project – The Delegates Wine Corporate fitout.

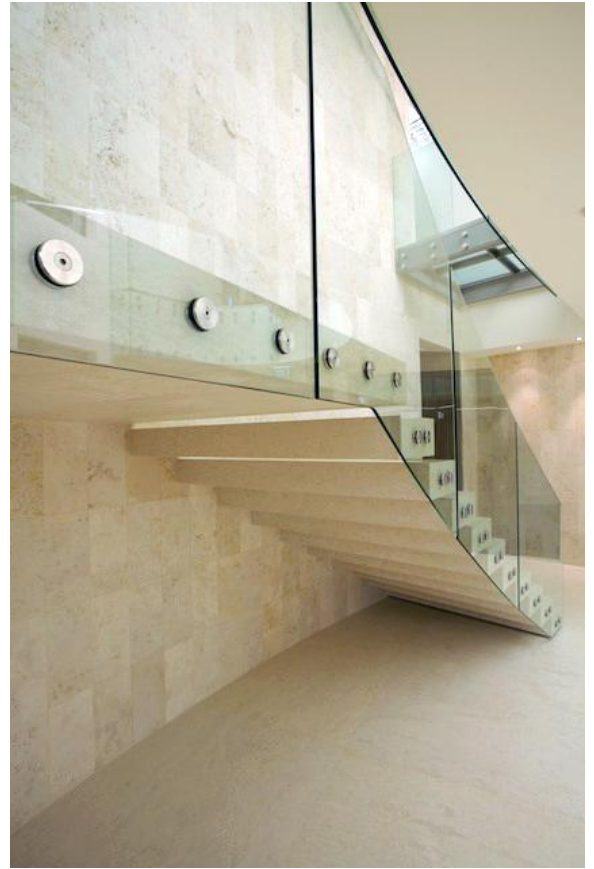
This highly elaborate establishment has incorporated some of the most challenging types of curved toughened glass known to man!

15mm clear curved toughened was bolt fixed using 50mm standoff's. In the void area the shape was elliptical with changing radii throughout each panel! This was to match the rooflite above to illuminate the level below.

Down the stair, the curved glass was fixed to the end of cantilevered stone steps. The curved toughened glass was engineered to be structural to tie the stair structure together. Accuracy was absolutely critical with +/- 1mm tolerance. With the help of Glasshape's dedicated and professional staff personnel, this was all possible. The result is a truly amazing and awesome masterpiece.

Next issue: The famous Burt Munro motor bike is now encased in a stunning curved glass cabinet – glass supplied by Glasshape.





Glasshape Ltd

Phone: 1800 042 716

Fax: 1800 040 934



Call us on 1800 042 716 or visit us @ www.glasshape.com.au for more info on our specialist glass. Look forward to hearing from you soon!

RECEIVE THIS NEWSLETTER BY **EMAIL** – send us your email address to sally@glasshape.net.nz

